



Dereham
Church Of England
Junior Academy

Welcome Meeting
Year 3

1. Meet the staff
2. Communicating with us
3. Behaviour Expectations
4. Mental Health and Resilience
5. A brief overview of the year
6. Homework Expectations
7. How to help your child at home
8. Free School Meals
9. SEN
10. Join 'Friends of DJA'





Mrs Scott
Head teacher



Mr Dack
Deputy Head



Mrs Hathaway
Pastoral Worker
Year 3+4

The Year 3 Team!



Mrs Groves
Curie
Year Leader



Mrs Crawford and Miss McKay
Mandela



Miss Rowbury
Keller

The Year 3 Team!



Mrs Ramm
HLTA
Curie

Miss Willis-Dawson
Curie
(Fridays)



Miss Cockell
Mandela



Miss Trumm
Keller

Communication from us

- Newsletters
- Letters/emails
- MyEd
- Postcards
- Facebook
- Phone calls
- Speaking at pick up times



How to communicate with us:

- Phone/email/visit the office
- MyEd
- Adults on the front gate every morning who can relay a message.

Behaviour

Be Respectful

Be Safe

Be Ready

Logical Consequences

A Focus on the Positives!

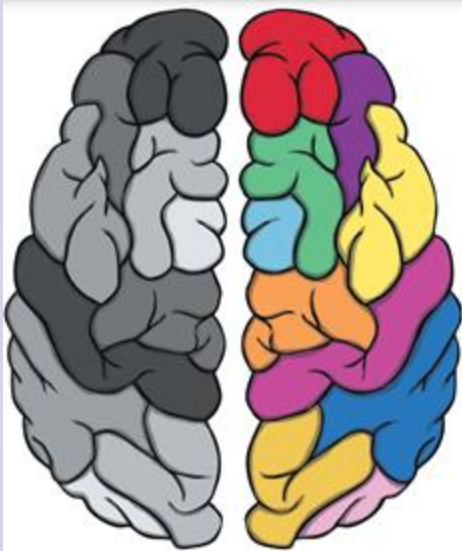
- Positive relationships
- Positive postcards
- House points
- Behaviour Tokens
- Golden tickets
- Learner of the week



Mental Health and Wellbeing

- We have **RSHE and Lifeskills** lessons which all contain slides and a chance to talk about mental health
- Pastoral workers
- Staff who are supportive of children
- Worry boxes in each class

Resilience!



Year 3

Topics:

- The Stone Age
- Fantastic Forces
- Light and Dark
- Dereham Delivers
- Plant Power
- Norfolk at War



- PE
- Steel Drums!
- Trips - TBC

Homework Expectations



Year 3 (per week) =

- **Minimum** of 3 x 15 min reading sessions
- 1 Maths task (paper)
- 1 Spelling task (paper)



Paper homework from 13th Septmeber. Books by Wednesday 18th September

TTRS and Spelling Shed practice are strongly encouraged (after half term!)

Reading

Books to come home by
Wednesday 18th
September

1. Book for pleasure
2. Book to match
decoding/
comprehension level

CRUCIAL to accessing the
curriculum



How can you help your child?

- Read with them!
- Ask about their day and encourage them to explain things they have learnt to you!
- Ensure they complete their homework each week
- Talk positively about school

How Did Life Change from the Stone Age to the Iron Age?

Stone Age Bronze Age Iron Age

Palaeolithic Mesolithic Neolithic

Eras of the Stone Age
The Stone Age began 2.5 million years ago and ended in the UK around 4000 years ago. The Stone Age was split into 3 eras:

- **Palaeolithic Era**- This is the oldest part of the Stone Age. It is from around 2.5 million years ago to around 10,000BC.
- **Mesolithic Era**- This is from 10,000BC to around 4500BC. The world climate got warmer which caused seas to rise and the UK to become an island for the first time. Before, it was joined to land.
- **Neolithic Era**- This is the newest part of the Stone Age and lasted from around 4000BC to around 2000BC

Primary Sources and Secondary Sources

- **Primary Source**- These are items, writings or architecture that are from the time we are studying
- **Secondary Sources**- These are replica items, books about the Stone Age or recreations. **Secondary sources are produced after the time being studied**

Different shelters
There were three main shelters in the Stone Age.

- **Caves**- mainly used in the **Palaeolithic Era**
- **Tents**- Made of animal hide- often used in the **Mesolithic Era** they were useful to be able to follow herds of animals before people began farming.
- **Stone Round/Rectangular Houses**- Mainly used in the **Neolithic Era** and **Bronze Age** when people started to stay in one place to farm crops and animals.

Skara Brae

Skara Brae is one of the most complete **Neolithic** Stone Age settlements found in the world.

It is found on one of the Scottish Orkney Islands.

- This **Primary source** showed things similar to us nowadays! cupboards!

Reading Record
including pages to support reading and writing

Free School Meals / Pupil Premium

This means pupils get...

- Funded school lunches
- Subsidised school trip payments
- Use of a school chromebook both in school and at home during their time here
- Funding for the school

Are you eligible?

Receive **Universal Credit** - your household income must be less than £7,400 a year (after tax and not including any benefits you get)

Receive **Child Tax Credit** (provided you're not also entitled to Working Tax Credit and have an annual gross income of no more than £16,190)

Receive **Income Support**

Receive income-based **Jobseeker's Allowance**

How do you apply?

<https://www.gov.uk/apply-free-school-meals>

Please ask if you need support!

Apply for free school meals

Check if your child can get free school meals in England and find out how to apply on your local authority's website.

There's a different process to apply for [free school meals in Northern Ireland](#), [free school meals in Scotland](#), or [free school meals in Wales](#).

If your child is eligible for free school meals, they'll also qualify for the [Holiday Activity and Food Programme](#). Food vouchers may also be available through the [Household Support Fund](#). Find out more by [contacting your local council](#).

Enter a postcode

For example SW1A 2AA

Find



SEN

- **SENCo**- Kelly Carter
- Working Days - Monday to Wednesday
- Oversees all pupils identified as having SEN to ensure they are supported



Who to contact?

Class teacher

SENCo- Mon to Wed

Visit our website:

[https://www.derehamjunior.dneat.org
/inclusion-sen-special-educational-needs-d-
disabilities/](https://www.derehamjunior.dneat.org/inclusion-sen-special-educational-needs-disabilities/)

Friends of DJA

We need you!

2023-2024 - £9000

- Raise money - leavers hoodies, books, wet play games
- Events - discos, hot dog and popcorn nights, ice creams, cinema

Any amount of time would be very appreciated!

❖ Speak to Sarah/ Rebecca if you are interested.

Any questions?