



Dereham
Church Of England
Junior Academy

Welcome Meeting
Year 5



1. Meet the staff
2. Communicating with us
3. Behaviour Expectations
4. Mental Health and Resilience
5. A brief overview of learning
6. SEND
7. Homework Expectations
8. How to help your child at home
9. Friends!

Meet the staff



Mrs Scott
Headteacher



Mr Dack
Deputy Head



Mrs Carter
SENCo



Mrs Peek
Pastoral Worker

Wilberforce



Mrs Dack
Class teacher/
Year Leader



Mrs Utting
HLTA

Naidu



Mrs Swetman
Class teacher
(Mon - Thurs)



Mr Dack
Class teacher
(Friday)



Miss Hammond
TA

Pankhurst



Miss Holt
Class teacher



Mrs Postle
TA

Attenborough



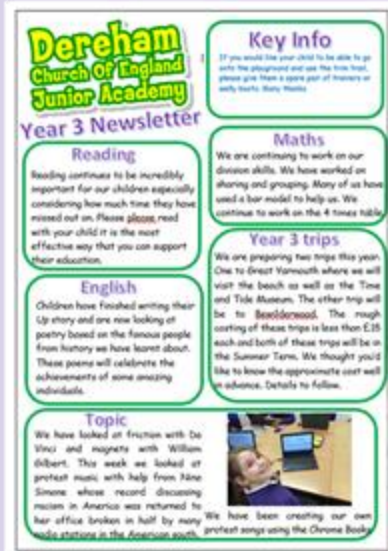
Miss Joy
Class teacher



Mrs Sutton
TA

Communication from us

- Newsletters
- Letters/emails
- MyEd
- Postcards
- Facebook
- Phone calls
- Speaking at pick up times



How to communicate with us:

- Phone/email/visit the office
- MyEd
- Adults on the front/back gate every morning who can relay a message.

Behaviour

Be Respectful

Be Safe

Be Ready

Logical Consequences

A Focus on the Positives!

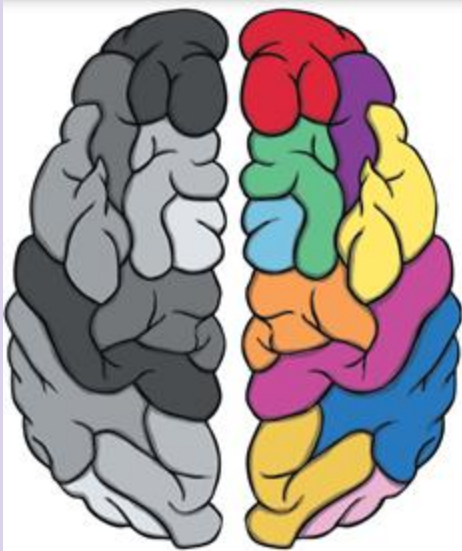
- Positive relationships
- Positive postcards
- House points
- Behaviour Tokens
- Golden tickets
- Learner of the week



Mental Health and Wellbeing

- We have RSHE lessons which all contain slides and a chance to talk about mental health
- Pastoral workers
- Staff who are supportive of children
- Worry boxes in each class
- Open classroom

Resilience!



Timetable

	8:55 - 10:30		10:30 - 10:45	10:45 - 12:15	12:15 - 1:15	1:15 - 3:17	
Monday	Reading Masters	English		Maths		Spelling/ Topic /CW	
Tuesday	Reading Masters - WD	English		handwriting/ Maths		Spelling/ Topic /CW	
Wednesday	Grammar	French		Maths		PE (Outdoor)	Mini Maths
Thursday	Reading Masters - TC	English		handwriting/ Maths		PE (Indoor)	Computing or RSHE
Friday	Reading Masters - VV	English		Maths		Spelling/ Topic /CW/LoW	

Summer term – Keyboards sessions

Topics - website

INTERGALACTIC INVESTIGATORS Science, Computing, Music and Art		POSITIVE POTIONS Science and Music	
LET BATTLE COMMENCE History and DT		A JOURNEY THROUGH FRANCE Geography, Art and DT	
EARTHQUAKES AND TSUNAMIS DT, Geography, Science, Music and Art		WHAT WAS THE GREATEST LEGACY OF THE ANCIENT GREEKS? History, Art and Computing	
LIFECYCLES AND FIELDWORK - Geography, Science and Art			
RE WEEK 1 - What message did the angles bring?	RE WEEK 2 - What does it mean for a Christian to have a relationship with Jesus?	RE WEEK 3 - Why is it important for Jews to meet together?	RE WEEK 4 - Is it fair?

Trips/Visitors

- Planetarium
- Zoom meeting with Alfred the Great
- Wellspring Church
- Ancient Greek Workshop
- Norwich Synagogue
- Natural History Museum, London
- Norfolk Broads Trip



SEN



Mrs Carter is our school SENCo.

Her role is to oversee all pupils identified as having SEN and ensure that they are supported with their learning.

Who to contact?

Class teacher

SENCo- Mon to Wed

Visit our website:

[https://www.derehamjunior.dneat.org
/inclusion-sen-special-educational-needs-d-
disabilities/](https://www.derehamjunior.dneat.org/inclusion-sen-special-educational-needs-disabilities/)

Homework Expectations

Year 5 (per week) =

- **Minimum** of 4 x 15 min reading sessions
- 1 x Times Tables task
- 1 x Spelling related task



How can you help your child at home?

- Read with/to them
- Ask about their day and encourage them to explain things they have learnt to you
- Ensure they complete their homework each week (this will help their learning in class)

INTERGALACTIC INVESTIGATORS

Phase One – What planets make up the Solar System?

You will begin by learning how humans have gained a greater understanding of the **Solar System**. After comparing the **Geocentric** and **Heliocentric** models, you will create a **database** to demonstrate important facts about the eight planets.



Mercury	☿	whiskers	our best
Venus	♀	red hair	two teeth
Earth	♁	purple hair	one tooth
Mars	♂	light skin	red hair
Jupiter	♃	red hair	two teeth

Having appraised 'The Planets' by the composer Gustav Holst and learned the **musical terminology** and **notations** used on Earth, you will compose your own rhythms based on your home planet.

Phase Two – What forces are there?

The second part of your mission will involve taking a closer look at planet Earth and learning about different **forces**.

Forces can make things move, change their speed, or change their shape.

During this phase, you will **PLAN, DO and REVIEW** different experiments looking at **gravity**, **air resistance** and **water resistance**.



Phase Three – What relationships are there between the Sun, Moon and Earth?

Here, you will learn that the Earth is a sphere which spins round and round (**rotates**) as it travels around (**orbits**) the Sun. One side of the Earth faces the Sun while the other faces away into space. **This is what causes day and night.**



You will also learn that as the **Moon orbits Earth**, its varying position means that the Sun lights up different regions, creating the illusion that the Moon is changing shape over time.



Having observed the Moon, you will learn techniques to create different **tones** and **textures** using the medium of pencil drawing in order to produce your own sketch of the Moon.



Phase Four – How do you create a multimedia presentation?

Finally, you will produce **multimedia presentation** (a type of presentation that uses several different forms of communication to get the message across). You will learn how to create hyperlinks, transitions, insert audio and other forms of media.

Just a few words from our fantastic **FRIENDS!**



After a few years without a PTA group following Lockdown, the FRIENDS were re-established last September, with a small but dedicated team committed to supporting the school.

Through events such as termly discos, bingo nights, cake sales, Freezer Fridays, raffles and selling refreshments at the annual sports day, we raised nearly £9000. This has enabled us to support the children in our school in a number of ways including:

Buying RSHE books

Sharing the cost of the 'Maths Magician' workshops for children and parents

Paying the bulk of costs for Year 6 hoodies/t.shirts

Providing fish and chips for the final treat day for Year 6

Providing extra special treats at the Christmas lunch

Organising an ice-cream van to visit the school so that every one in our school community could have a free ice-cream or lolly

We are very keen to expand our team and would welcome your support!

If you would like to find out more, please do contact us on friendsdja@outlook.com. We also have a facebook page: **Friends of Dereham Junior**

Alternatively, we are usually at the front gate at the end of the day so please do come and chat with us.

We look forward to another amazing year of fund-raising and hope you will join us!

Chairperson - Rebecca Edwards (mum of Amber Year 6)

Treasurer - Sarah Lawrence (mum of Noah Year 6 and Oscar Year 4)

Secretary - Louisa Vargeson (mum of Hugo (Year 5) Ezra and Rafferty (Year 4)).

Wed 18th Sept - Hall