

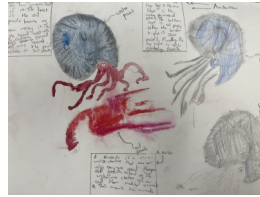
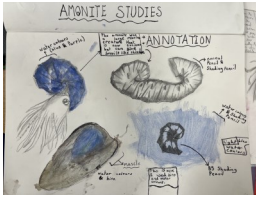


# YEAR SIX



## Half way through the year!

And just like that, the first half of year 6 is nearly over! This week we have been finishing our topic on fossils by doing some art. We have been experimenting with different mediums. Take a look at some of our work:

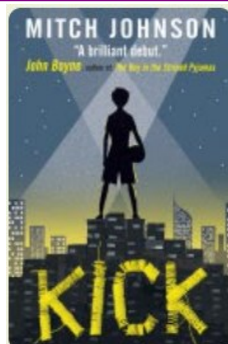


We have also been writing non-chronological reports about animals. To see some of our work, head over to our website.

Next topic: Macbeth and Benin Gone

## Booktalk!

A great, read by a local author, Kick is about a boy called Budi growing up in the Indonesian city of Jakarta. He is determined to play for the greatest team on earth, instead of sweating over each stitch he sews, each football boot he makes. But one unlucky kick brings Budi's world crashing down. Now he owes the Dragon, the most dangerous man in Jakarta. Soon it isn't only Budi's dreams at stake, but his life.



A gripping adventure full of twists and turns and inspiring bravery against all odds.

## Upcoming Trip

### Sainsbury Centre, Norwich

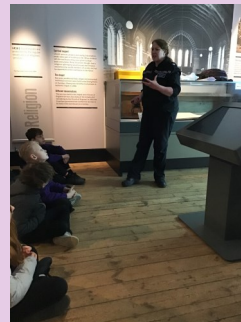
Shakespeare and Tabei—Wednesday 19th March

Bevan and Malala—Thursday 20th March

Please ensure children are wearing their full uniform.

## Crucial Crew

Last week year 6 headed to Gressenhall to meet with the Crucial Crew. The Crucial Crew is made up of the police, the fire service, the RNLI and health professionals. They found out: how to keep safe online; how they could help someone who's fallen into water; the dangers of smoking and vaping; how to prevent fires; how to use DRS ABC in a medical emergency; as well as how their voice is important to improving the health service. Here are a few photos of our afternoon:



## Upcoming dates:

### February

NPSCC Number Day (7<sup>th</sup>)  
Half Term (17<sup>th</sup>-21<sup>st</sup>)  
Children's Mental Health Week (3<sup>rd</sup> - 9<sup>th</sup>)  
Safer Internet Day (11<sup>th</sup>)  
Language Day (21<sup>st</sup>)  
Ramadan (28<sup>th</sup> - 30<sup>th</sup> Mar)

### March

Shrove Tuesday (4<sup>th</sup>)  
Ash Wednesday (5<sup>th</sup>)  
World Book Day (6<sup>th</sup>)  
Parents Evening 3.30-7.00 (12<sup>th</sup>)  
Parents Evening 3.30-6.15 (13<sup>th</sup>)  
British Science Week (10<sup>th</sup> - 14<sup>th</sup>)  
International Women's Day (8<sup>th</sup>)

Year 6 Mock SATS — w/b 10th March